

After surgery is completed



To help an infant adjust to his or her new found mobility and altered latch, parents can assist the infant by a variety of different massage techniques.

Slowly rotate fingers around the outside of the lips to entice your child to suck on your finger and help create a new sucking pattern. Pressure during sucking should be on your finger nail post surgery , not only on your knuckle.

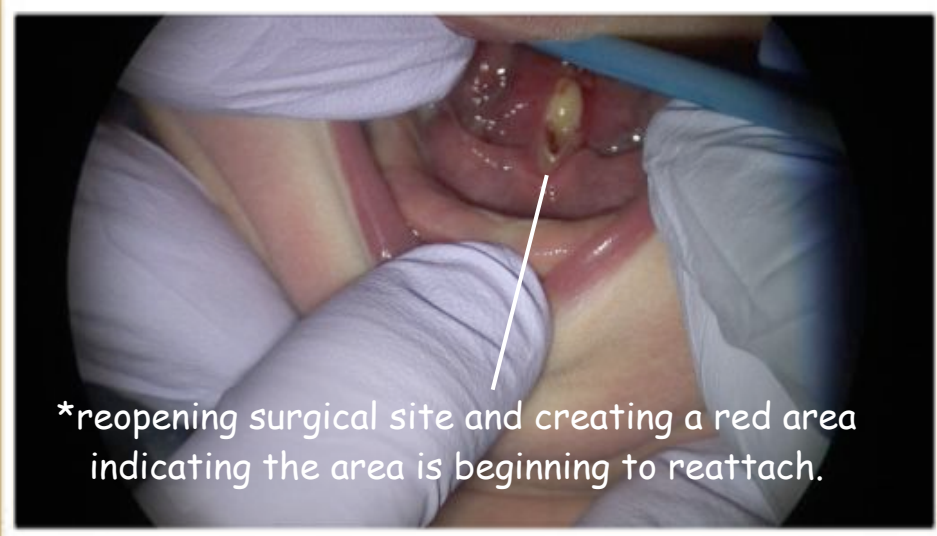


Lingual frenum revision post surgical care



Method one

Method two



*reopening surgical site and creating a red area indicating the area is beginning to reattach.



For approximately 7 days, stretching is completed-4 times daily, by elevating the tongue using a plastic tongue blade to prevent reattaching.

or

Placing both index fingers under the tongue and pushing upward and down toward the throat to keep surgical site from reattaching.

*Significant pressure must be applied to open the surgical site if it begins to grow back together, in order to prevent reattachment and make breastfeeding successful.



Pain medication, such as acetaminophen or a teething gel, is ok to use for discomfort.